

SR Globals
DWARKA, NEW DELHI



GST - 07FSIPK9040K1ZA



About – SR Globals

Welcome to the dynamic world of SR Globals, where our journey is rooted in a steadfast commitment to achieving unparalleled customer satisfaction. From our humble beginnings, we have diligently expanded our infrastructure across a sprawling expanse, ensuring we are well-equipped with all the essential requisites to execute our tasks at the pinnacle of global standards. At SR Globals, we take pride in our team of seasoned professionals, boasting years of expertise in the intricate domains of PEB Structures, Foot Over Bridges, Bus Shelters, Unipolar Hoarding, Gantries, and Underpasses. As a focused organization, our mission revolves around delivering products that serve as impactful mediums of expression. Join us on this exciting venture as we continue to innovate, excel, and redefine the benchmarks of excellence in the infrastructure industry.

Introduction

Welcome to SR Globals, where our commitment to achieving total customer satisfaction drives our every endeavour. As a company, we have meticulously developed our infrastructure across a sprawling area, ensuring that we are well-equipped with all the necessary requisites to meet global standards in our erection tasks.



Infrastructure Excellence

Our infrastructure is a testament to our dedication to excellence. With state-of-the-art facilities and a focus on quality, we are positioned to deliver projects that not only meet but exceed expectations. From PEB Structures to Foot Over Bridges, Bus Shelters, Unipolar Hoarding, Gantries, and Underpasses, we take pride in our comprehensive capabilities.



Experienced Professionals

At SR Globals, our success is fueled by a team of seasoned professionals with years of experience in the field. We have assembled a talented workforce that specializes in PEB Structures, Foot Over Bridges, Bus Shelters, Unipolar Hoarding, Gantries, and Underpasses. Their expertise ensures that every project is executed with precision and finesse.



focused Organization

As a focused organization, we are driven by a singular goal – to bring forth products that serve as effective mediums of expression. Whether it's creating aesthetically pleasing structures or innovative advertising solutions, we strive to make a meaningful impact in every project we undertake.



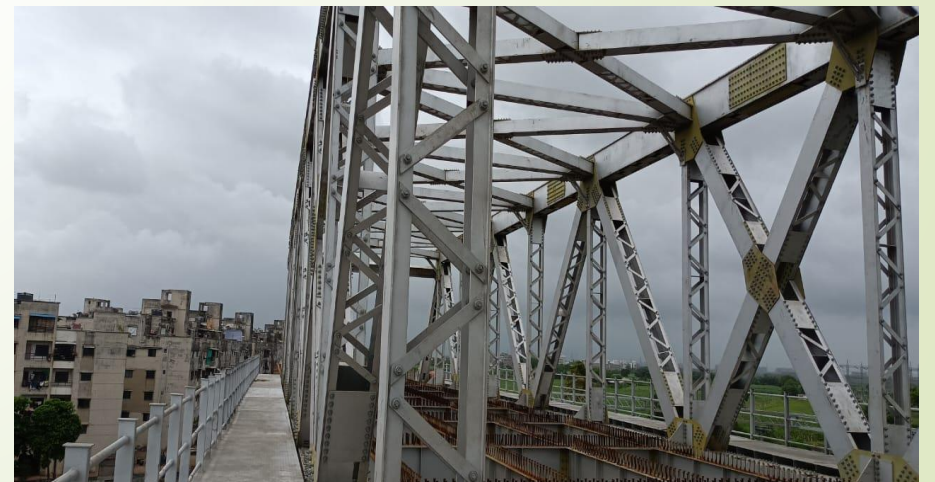
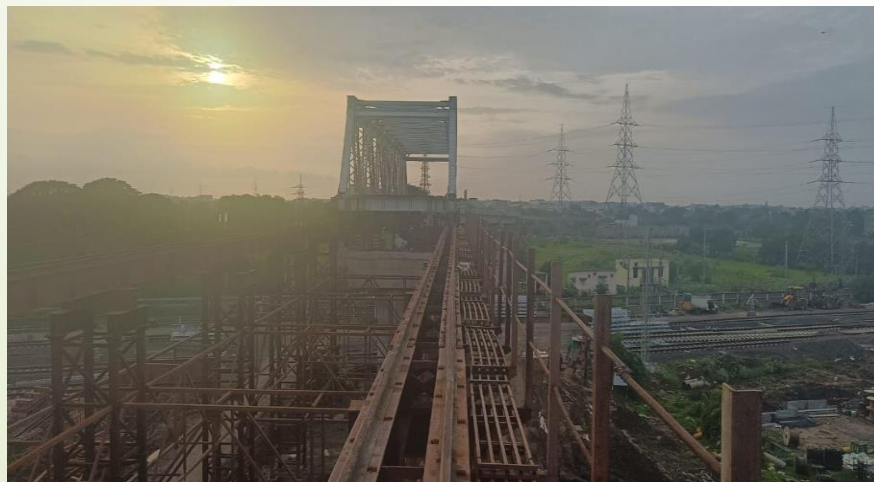
Our Commitment

At SR Globals, our commitment to excellence, customer satisfaction, and innovation is unwavering. Join us on a journey where infrastructure meets expression, and together, let's build a future that speaks volumes.



Design Factor

In the context of SR Globals' commitment to achieving total customer satisfaction and adhering to global standards, several crucial design factors contribute to the success of their projects. Repetition and Standardization play a pivotal role, encompassing the repetition of specific building types, such as portal sheds, and the implementation of common and standardized details for connections. Achievable Tolerance is another critical factor, especially when specifications demand tighter tolerances than the National Structural Steelwork Specification (NSSS). Meeting such stringent requirements may necessitate special controls and engineered details. Additionally, the choice between braced frames and continuous frames under Frame Type is a significant consideration for the company, influencing the structural integrity of PEB structures, Foot Over Bridges, Bus Shelters, Unipolar Hoarding, Gantries, and Underpasses. By strategically addressing these design factors, SR Globals ensures the delivery of high-quality, globally compliant infrastructure solutions, reflecting their dedication to excellence.



Site Practice

In the site practice at SR Globals, the efficiency of steel erection is intricately tied to the selection and availability of cranes rather than other construction activities. The optimal choice of crane is crucial, considering factors such as rapid movement capabilities (hook travel, slewing, and jibbing out). Furthermore, strategic placement within the site footprint plays a pivotal role in enhancing overall productivity. The use of two cranes in tandem, while sometimes necessary, incurs a notable time penalty for activities such as slinging, lifting, and placing loads. At SR Globals, where the focus is on achieving total customer satisfaction, the company's commitment to global standards is evident in its sprawling infrastructure and a team of experienced professionals specializing in PEB Structures, Foot Over Bridges, Bus Shelters, Unipolar Hoarding, Gantries, and Underpasses. The company's dedicated approach reflects its aim to deliver products that serve as effective mediums of expression in the construction industry.





**Heavy
Steel
Structure
Erection**

**Pre
Engineering
Building**

**Sheeting
Works**

**Our
Services**

Torqueing

**Bridge
Erection**

Building Tomorrow, Today With SR Globals

In the culmination of our presentation, we take immense pride in the journey of SR Globals, a company founded on the principles of unwavering commitment to total customer satisfaction. Our relentless pursuit of excellence has led us to develop a robust infrastructure spanning vast areas, ensuring that we are not just equipped with the necessary requisites, but also capable of executing erection tasks in accordance with the highest global standards. The backbone of our success lies in our dedicated team of professionals, each possessing years of invaluable experience in the intricate fields of PEB Structures, Foot Over Bridges, Bus Shelters, Unipolar Hoarding, Gantries, and Underpasses. As a focused organization, we are committed to the continuous innovation and delivery of products that transcend functionality, serving as effective mediums of expression. With SR Globals, we invite you to join us in building a future where excellence knows no bounds.

Manpower Histogram

SR. NO.	Description	No Of Employees
1	Engineer	4
2	Supervisor	6
3	General Foreman	7
4	Skilled Worker	25
5	Un-skilled Worker	35
6	Semi-skilled Worker	28
7	Welder	15
8	Gas Cutter	5
9	Painter	4
10	Cook	6

Our Completed Projects

Project name:- Next Gen Dry Mill
Location:- Kamakhya (Assam)
Types of Area:- Green Area
Completion Days - 15 days

SR Globals is currently undertaking a project called "Next Gen Dry Mill" located in Kamakhya, Assam. This initiative aims to establish an advanced dry mill facility in the region. The Next Gen Dry Mill project likely focuses on modernizing the milling process for grains or agricultural produce, potentially incorporating advanced technologies for enhanced efficiency, quality control, and sustainability. However, specific details about the project's scope, objectives, and technological features would require further information from SR Globals or related sources.



Our Completed Projects

Project name:-	Steel Erection work in Tata Steel Limited, Joda
Work Oder No:-	WO-008-PIPL-094- E VEND13E
Types of Area:-	Inside The Plant (Brown Area)
Location:-	Joda Odisha
Total No. of Building:-	3 Building
Completion Days –	6 Months

Tata Steel Limited's Joda project in Odisha involves the construction of a Pre-Engineered Building (PEB) all 3 building completed, enhancing the company's industrial infrastructure. Located in the mineral-rich region of Joda Odisha, this project supports Tata Steel's operations by providing a modern, efficient structure tailored for heavy industrial use. The PEB design offers cost-effective and timely construction solutions, aligning with Tata Steel's commitment to sustainable and innovative development in India's industrial sector. The project underscores Tata Steel's leadership in advanced steel manufacturing and infrastructure development.







Our Completed Projects

Project Name: Nishtha Textiles
Project No: KTSC2314660
Location: Kadegaon, Sangali (Pune)
Completion Days - 45 days

As of now, I don't have specific information on ongoing projects by SR Globals, including the Nishtha Textiles project in Kadegaon, Sangali (Pune). For the most accurate and up-to-date information on their ongoing projects, I recommend checking their official website or contacting them directly.



On-going Projects

Project Name:- Bongaigaon Railway Workshop
Project Weight: 350 MT
Types of Area:- Under Railways Workshop(Brown Area)
Location:- Bongaigaon (Assam)

SR Globals is currently engaged in the development of the Bongaigaon Railway Workshop project located in Bongaigaon, Assam. The project aims to enhance railway infrastructure and facilities in the region. It involves the construction and modernization of workshops to support railway maintenance and repair operations. This project contributes to the improvement of railway services and transportation networks in the area, fostering economic development and connectivity.





On-going Projects

Project Name: Kamakhya Biofuels Pvt. Ltd.

Project Weight: 280 MT

Types of Area:- Green Area

Location:- Darrang, Guwahati(Assam)

SR Globals is currently engaged in the Kamakhya Biofuels project located in Darrang, Assam. This project focuses on the production of biofuels, contributing to sustainable energy solutions. As biofuels are renewable and environmentally friendly alternatives to conventional fossil fuels, the Kamakhya Biofuels project aligns with efforts to mitigate climate change and reduce dependence on non-renewable resources. Through this initiative, SR Globals aims to promote eco-friendly energy production and support regional development in Assam.





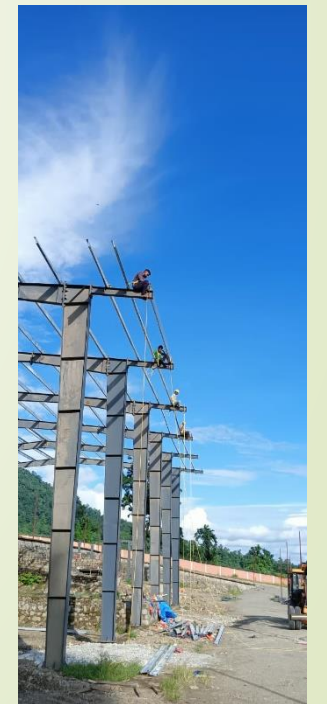
On-going Projects

Project Name:- Bhutan Projects

Types of Area:- Green Area

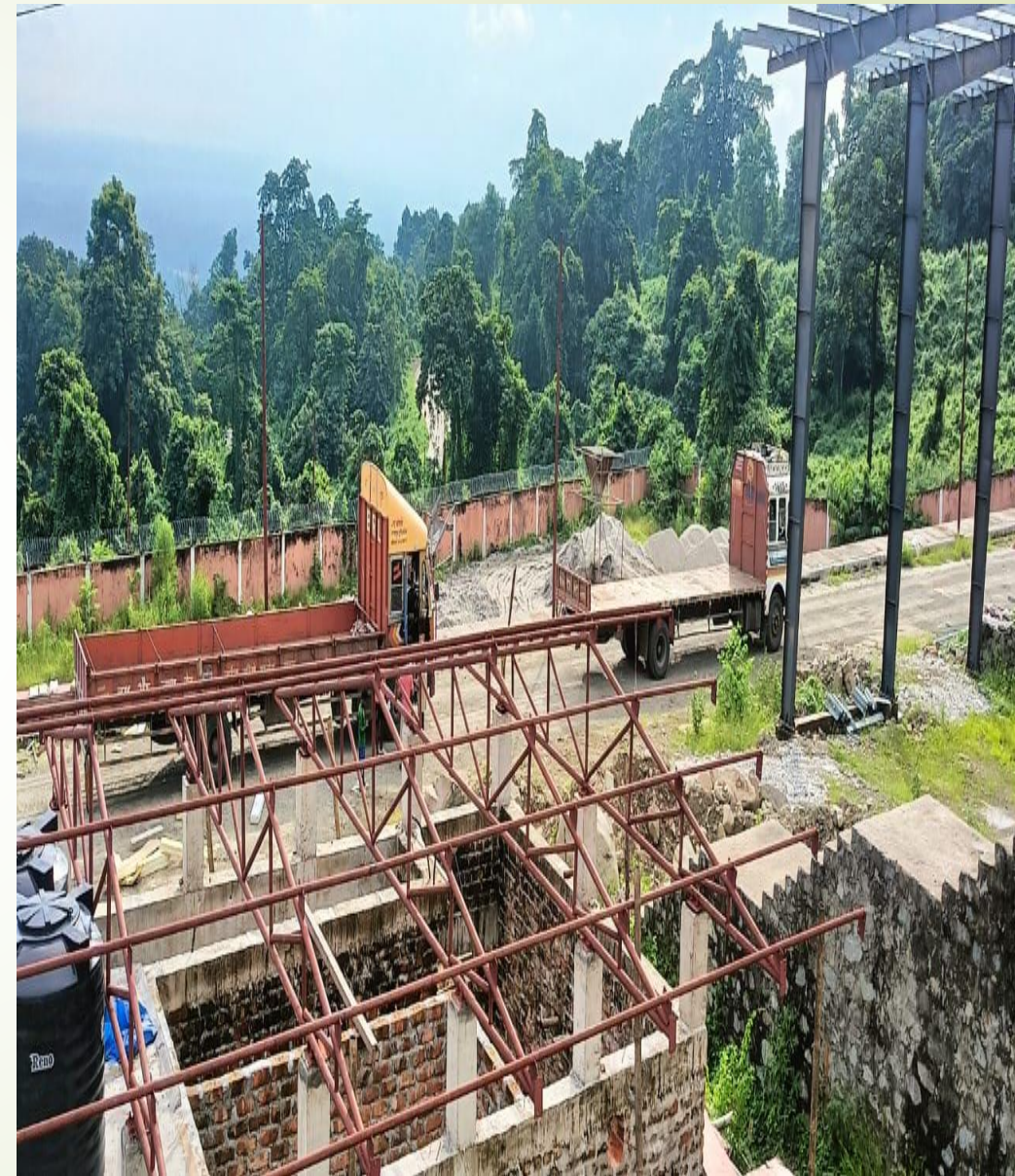
Location:- Nganglam, Bhutan

The Bhutan Projects, located in Nganglam, Bhutan, mark SR Globals' first venture in the region. This project involves the design and construction of Pre-Engineered Buildings (PEB), showcasing SR Globals' expertise in modern construction techniques. This initiative aims to enhance the infrastructure in Nganglam, supporting local development and demonstrating SR Globals' commitment to expanding their footprint in new markets.









Our Major Clients

- Pinax Steel Structure Limited
- Pressmech Infrastructure (P) Ltd.
- Unitech Structure Work Pvt Ltd.
- Steelbuild infra Projects Pvt. Ltd.
- Shrinik Infra Pvt. Ltd.
- Trilok Infracon (India) Pvt. Ltd.



Contact:

SR Globals



Dwarka

New Delhi – 110059

Working Location

● Assam ● Bihar ● Jharkhand ● Odisha
● West Bengal (Kolkata)



8210198867

6200679613

rahulroy@srglobals.com



info@srglobals.com

srglobalsenterprises@gmail.com



www.srglobals.com